

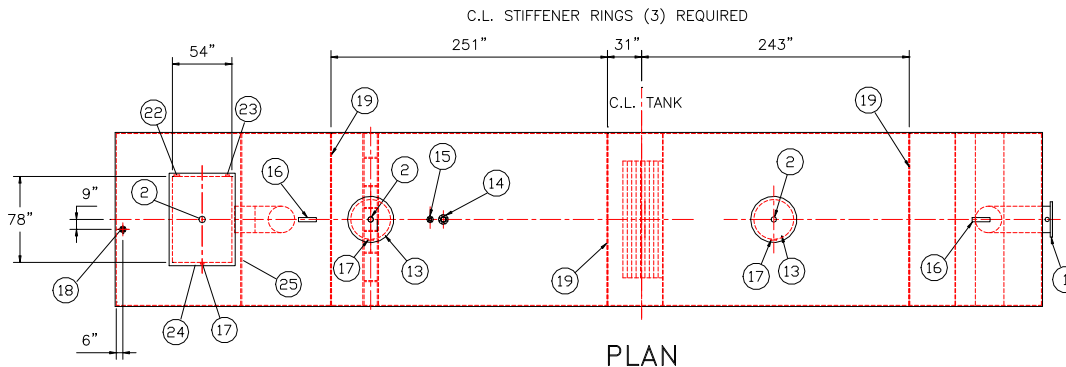
GENERAL SPECIFICATIONS

NO. REQ'D: (1)  
CAPACITY: 60000 GALLONS  
TYPE: HTC-J, HIGHGUARD, DW TYPE I 360  
MATERIAL: MILD CARBON STEEL  
FLOW RATE: 6000 GPM  
GAUGE: BASED ON 60" MAX BURIAL  
SHELL- INNER OUTER  
HEADS- 3/8 1/4"

SURFACE PREP:  
SSPC NO.6 BLAST ALL EXTERIOR SURFACES  
SSPC NO.10 BLAST ALL INTERIOR OF WATER CHAMBER ONLY

COATING: MATERIAL THICKNESS  
EXTERIOR- HIGHGUARD (75 MILS)  
INTERIOR- POLYURETHANE (15 MILS)  
INTERIOR OF WATER CHAMBER

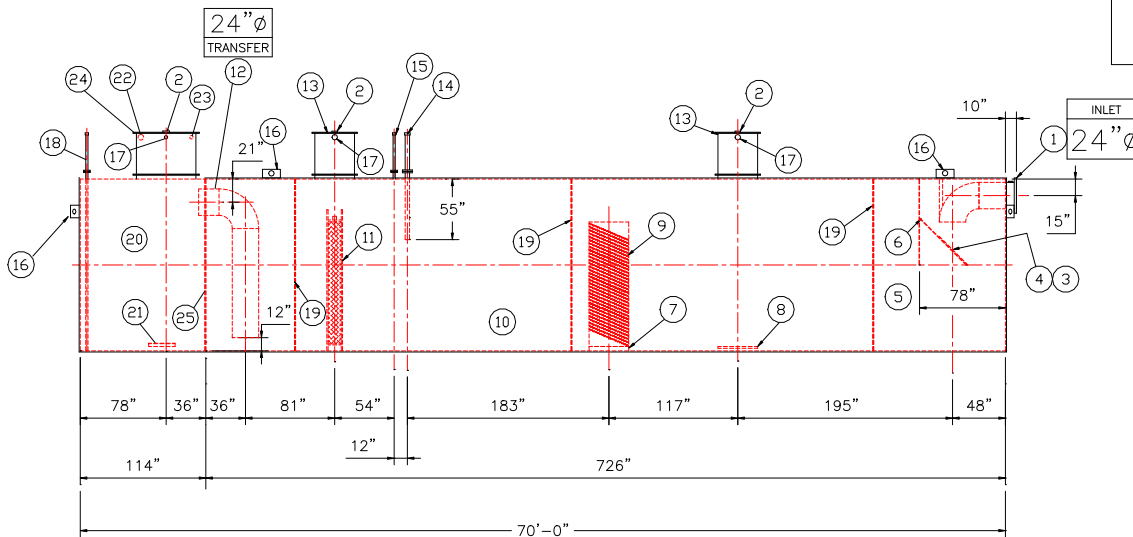
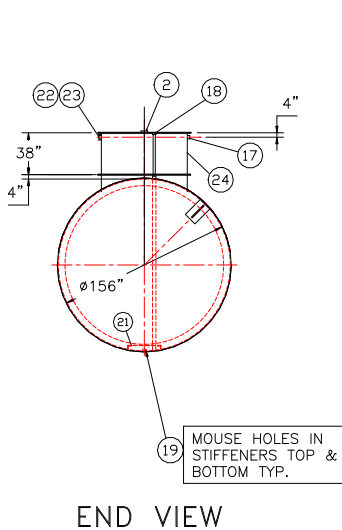
CONSTRUCTION :  
LAP FIT & WELD ALL EXTERIOR SEAMS  
OPERATING PRESSURE : ATMOSPHERIC



- PROVIDED EQUIPMENT
- 150# R.F.S.O. FLANGE W/ 2" FNPT FOR VENT
  - 4" FNPT FOR GAUGE WITH PLUG
  - VELOCITY HEAD DIFFUSION BAFFLE
  - WEAR PLATE
  - SEDIMENT CHAMBER
  - UNDERFLOW BAFFLE (REMOVABLE)
  - SLUDGE BAFFLE
  - STRIKER PLATES
  - PARALLEL CORRUGATED PLATE COALESCER. CORELLA PVC PLATES (3" PLATE SPACING)
  - OIL/WATER SEPARATOR CHAMBER
  - 6" THICK PETROSCREEN COALESCER MATERIAL INSTALLED W/ PULL ROD SHIPPED LOOSE
  - STEEL TRANSFER PIPE W/ DOWNCOMER
  - 36" MANWAY WITH NEO-CORK GASKETS. BOLT-ON EXTENSION SHIPPED LOOSE
  - 4" 150# RFSO FLANGE FOR OIL PUMP-OUT WITH INTERNAL PVC PIPE INSTALLED & RISER PIPE W/ FNPT CPLG ON TOP SHIPPED LOOSE
  - 2" 150# RFSO FLANGE FOR LEVEL SENSOR. RISER PIPE W/ FNPT CPLG ON TOP SHIPPED LOOSE
  - 2" FNPT FOR VENT
  - 2" 150# RFSO FLANGE FOR LEVEL SENSOR. RISER PIPE W/ FNPT CPLG ON TOP SHIPPED LOOSE
  - 6"x1/2" STIFFENER
  - EFFLUENT WATER CHAMBER
  - PUMP MOUNT
  - 4" FNPT FOR EFFLUENT PUMP CONDUIT AND WIRING
  - 2" FNPT FOR EFFLUENT LEVEL SENSOR CONDUIT AND WIRING
  - RECTANGULAR MANWAY WITH CLOSED CELL SPONGE GASKET. BOLT-ON EXTENSION SHIPPED LOOSE
  - 1/4" BULKHEAD

- ANCILLARY PROVIDED EQUIPMENT
- 24" NEO-CORK MANWAY GASKETS
  - SETS OF NUTS/BOLTS/WASHERS FOR 24" MANWAY
  - 54"x78" CLOSED CELL FOAM MANWAY GASKET
  - 54"x78" RUBBER RIBBON MANWAY GASKET
  - SETS OF NUTS/BOLTS/WASHERS FOR 54"x78" MANWAY

- NOTES
- POLYURETHANE HIGHGUARD TANK IS NOT APPROVED FOR THE STORAGE OF HEATED PRODUCTS
  - ALL VENT PIPING BY INSTALLER
  - 15000 VOLT SPARK TEST PROVIDED AT FACTORY
  - CUSTOMER TO PROVIDE EFFLUENT PUMPING INFORMATION FOR PROPER PUMP SIZING & PUMPOUT DESIGN




NOTE :  
ALL RIGHTS RESERVED. THIS DRAWING OR ANY PART THEREOF MUST NOT BE REPRODUCED IN ANY FORM WITHOUT THE WRITTEN PERMISSION OF HIGHLAND TANK.  
HIGHLAND TANK SHALL BE RESPONSIBLE ONLY FOR ITEMS INDICATED ON THIS FABRICATION DRAWING UNLESS OTHERWISE NOTED. CUSTOMER IS RESPONSIBLE FOR VERIFYING CORRECTNESS OF SIZE / LOCATION OF FITTINGS , ACCESSORIES & COATINGS SHOWN ON THIS DRAWING

UNLESS OTHERWISE SPECIFIED DIMENSIONS ARE IN INCHES  
TOLERANCES ARE + OR - 1"

SCALE: NTS DATE: DWG. BY: REM DWG. NO: 60000HGDWHTCJ

REVISIONS

 **Highland Tank**

U.S. Patent #4,722,800 Canadian Patent # 1,296,263  
#6,606,224 # 2,389,065

60000 GALLON OIL WATER SEPARATOR  
HTC-J, DOUBLE WALL, DW TYPE I 360

CUSTOMER:

PROJECT:

QUOTE NO:

CHK'D BY:

GENERAL SPECIFICATIONS

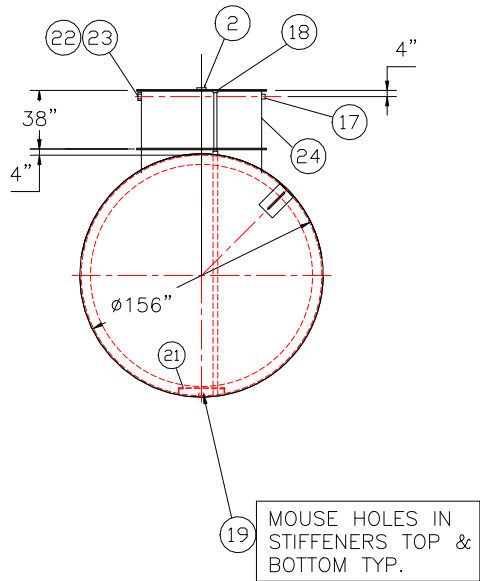
NO. REQ'D: (1)  
CAPACITY: 60000 GALLONS  
TYPE: HTC-J, HIGHGUARD, DW TYPE I 360  
MATERIAL: MILD CARBON STEEL  
FLOW RATE: 6000 GPM  
GAUGE: BASED ON 60" MAX BURIAL

|        |       |       |
|--------|-------|-------|
|        | INNER | OUTER |
| SHELL- | 3/8   | 1/4"  |
| HEADS- | 3/8"  | 1/4"  |

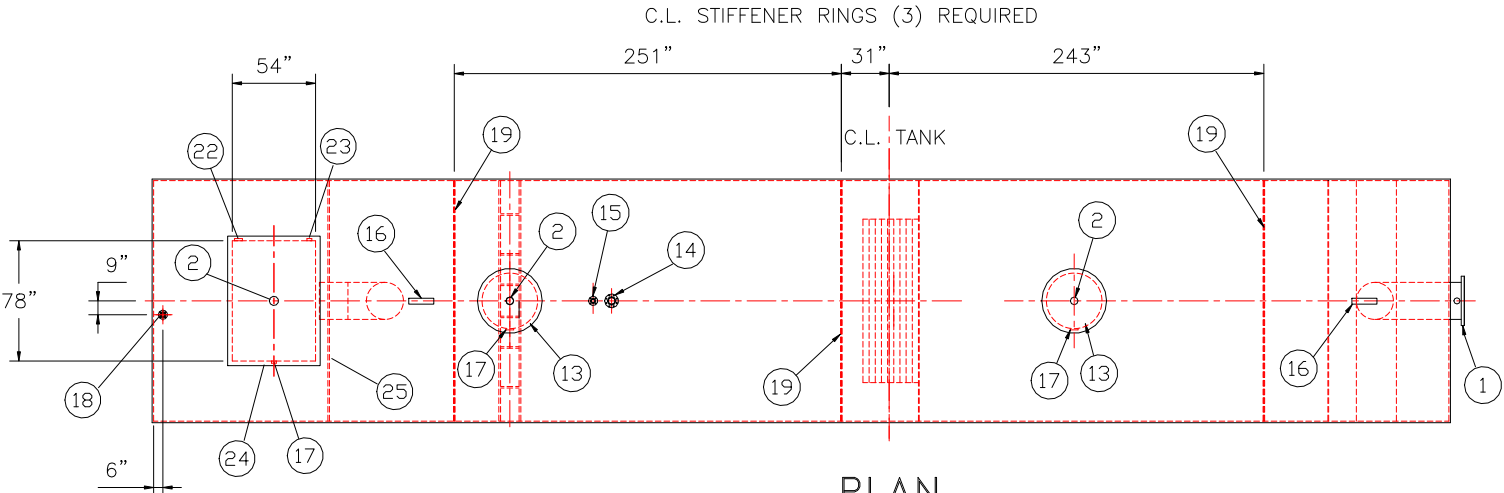
SURFACE PREP:  
SSPC NO.6 BLAST ALL EXTERIOR SURFACES  
SSPC NO.10 BLAST ALL INTERIOR OF WATER CHAMBER ONLY

|           |                           |           |
|-----------|---------------------------|-----------|
| COATING:  | MATERIAL                  | THICKNESS |
| EXTERIOR- | HIGHGUARD                 | (75 MILS) |
| INTERIOR- | POLYURETHANE              | (15 MILS) |
|           | INTERIOR OF WATER CHAMBER |           |

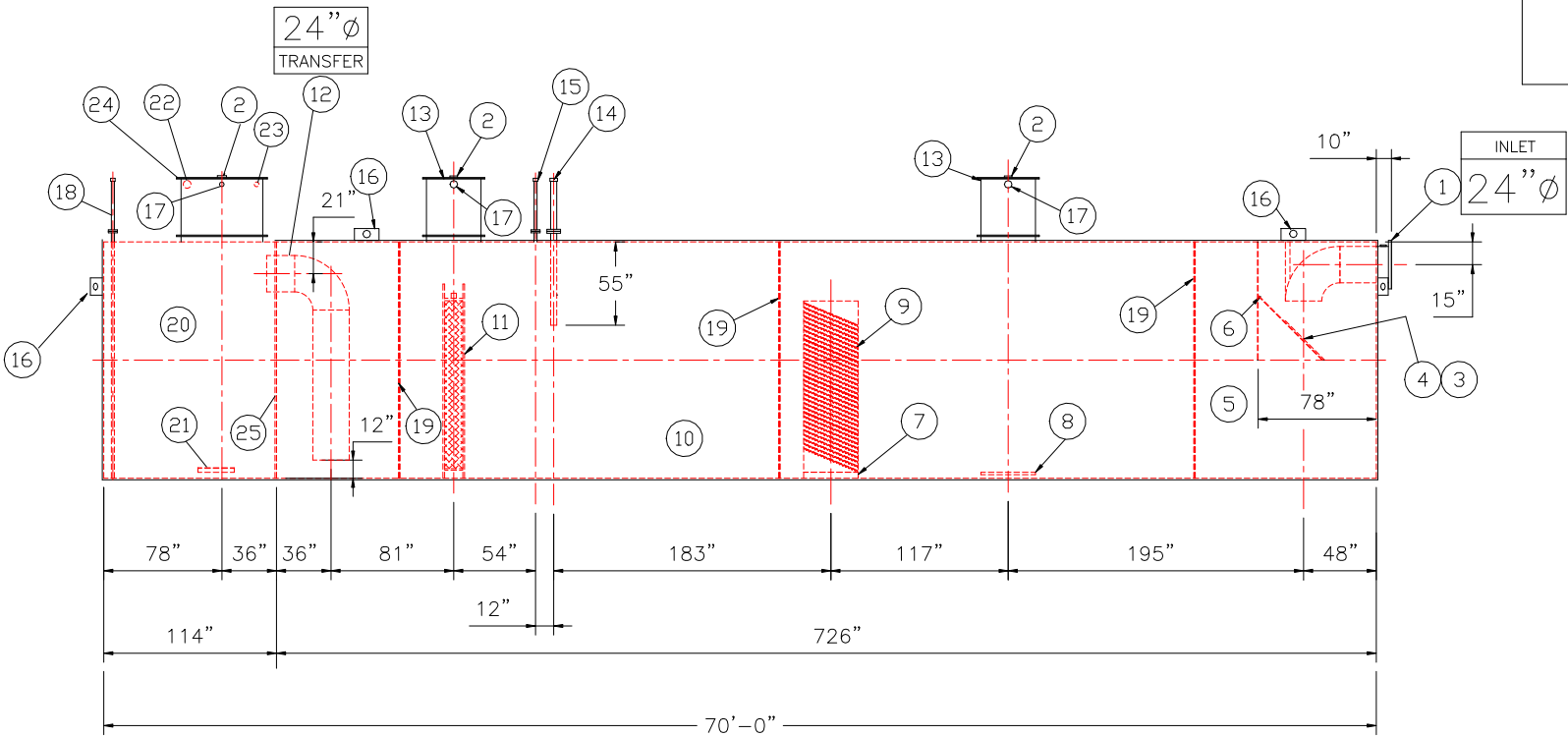
CONSTRUCTION :  
LAP FIT & WELD ALL EXTERIOR SEAMS  
OPERATING PRESSURE : ATMOSPHERIC



END VIEW



PLAN



ELEVATION

PROVIDED EQUIPMENT

1. 150# R.F.S.O. FLANGE W/ 2" FNPT FOR VENT
2. 4"Ø FNPT FOR GAUGE WITH PLUG
3. VELOCITY HEAD DIFFUSION BAFFLE
4. WEAR PLATE
5. SEDIMENT CHAMBER
6. UNDERFLOW BAFFLE (REMOVABLE)
7. SLUDGE BAFFLE
8. STRIKER PLATES
9. PARALLEL CORRUGATED PLATE COALESCER. CORELLA PVC PLATES (3" PLATE SPACING)
10. OIL/WATER SEPARATOR CHAMBER
11. 6" THICK PETROSCREEN COALESCER MATERIAL INSTALLED W/ PULL ROD SHIPPED LOOSE
12. STEEL TRANSFER PIPE W/ DOWNCOMER
13. 36"Ø MANWAY WITH NEO-CORK GASKETS. BOLT-ON EXTENSION SHIPPED LOOSE
14. 4"Ø 150# RFSO FLANGE FOR OIL PUMP-OUT WITH INTERNAL PVC PIPE INSTALLED & RISER PIPE W/ FNPT CPLG ON TOP SHIPPED LOOSE
15. 2"Ø 150# RFSO FLANGE FOR LEVEL SENSOR. RISER PIPE W/ FNPT CPLG ON TOP SHIPPED LOOSE
16. LIFTING LUG
17. 2"Ø FNPT FOR VENT
18. 2"Ø 150# RFSO FLANGE FOR LEVEL SENSOR. RISER PIPE W/ FNPT CPLG ON TOP SHIPPED LOOSE
19. 6"x1/2" STIFFENER
20. EFFLUENT WATER CHAMBER
21. PUMP MOUNT
22. 4" FNPT FOR EFFLUENT PUMP CONDUIT AND WIRING
23. 2" FNPT FOR EFFLUENT LEVEL SENSOR CONDUIT AND WIRING
24. RECTANGULAR MANWAY WITH CLOSED CELL SPONGE GASKET. BOLT-ON EXTENSION SHIPPED LOOSE
25. 1/4" BULKHEAD

ANCILLARY PROVIDED EQUIPMENT

- (4) 24" NEO-CORK MANWAY GASKETS
- (4) SETS OF NUTS/BOLTS/WASHERS FOR 24" MANWAY
- (1) 54"x78" CLOSED CELL FOAM MANWAY GASKET
- (1) 54"x78" RUBBER RIBBON MANWAY GASKET
- (2) SETS OF NUTS/BOLTS/WASHERS FOR 54"x78" MANWAY

NOTES

1. POLYURETHANE HIGHGUARD TANK IS NOT APPROVED FOR THE STORAGE OF HEATED PRODUCTS
2. ALL VENT PIPING BY INSTALLER
3. 15000 VOLT SPARK TEST PROVIDED AT FACTORY
4. CUSTOMER TO PROVIDE EFFLUENT PUMPING INFORMATION FOR PROPER PUMP SIZING & PUMPOUT DESIGN

REVISIONS



**Highland Tank**

U.S. Patent #4,722,800 Canadian Patent # 1,296,263  
#6,606,224 # 2,389,065

60000 GALLON OIL WATER SEPARATOR  
HTC-J, DOUBLE WALL, DW TYPE I 360

CUSTOMER:

PROJECT:

QUOTE NO:

CHK'D BY:

SCALE:

DATE:

DWG. BY:

REM

DWG. NO.:

60000HGDWHTCJ

NOTE :  
ALL RIGHTS RESERVED. THIS DRAWING OR ANY PART THEREOF MUST NOT BE REPRODUCED IN ANY FORM WITHOUT THE WRITTEN PERMISSION OF HIGHLAND TANK.  
HIGHLAND TANK SHALL BE RESPONSIBLE ONLY FOR ITEMS INDICATED ON THIS FABRICATION DRAWING UNLESS OTHERWISE NOTED. CUSTOMER IS RESPONSIBLE FOR VERIFYING CORRECTNESS OF SIZE / LOCATION OF FITTINGS , ACCESSORIES & COATINGS SHOWN ON THIS DRAWING

UNLESS OTHERWISE SPECIFIED DIMENSIONS ARE IN INCHES  
TOLERANCES ARE + OR - 1"