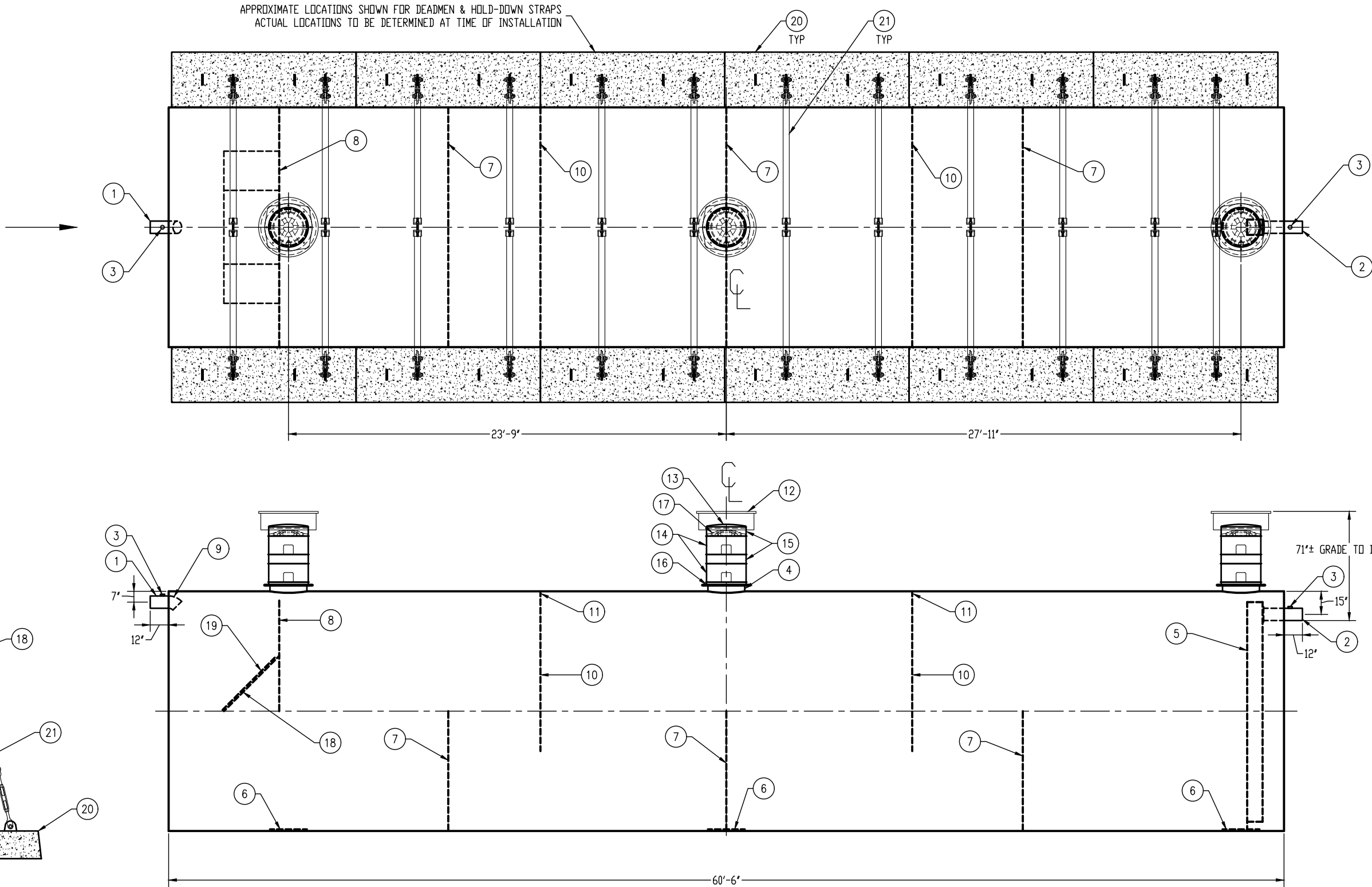


GENERAL SPECIFICATIONS

QUANTITY: ONE (1)  
MODEL: PGI-60000-3  
CAPACITY: 60,000 GALLONS  
TYPE: SINGLE WALL, HIGHGUARD, UNDERGROUND  
MATERIAL: 1/2" CARBON STEEL  
MATERIAL BASED ON 60" MAXIMUM BURIAL DEPTH  
LAP FIT AND WELD INTERIOR AND EXTERIOR SEAMS  
TANK TEST: 3-5 PSI AIR TEST  
SURFACE PREP: SSPC-SP 10 BLAST INTERIOR SURFACES  
SSPC-SP 6 BLAST EXTERIOR SURFACES  
EXT. COATING: HIGHGUARD POLYURETHANE - 75 MILS  
INT. COATING: CHEMTHANE 4200 PW (15 MILS DFT)  
OPERATING PRESSURE: ATMOSPHERIC

NOTE: OPTIONAL 2" VENTS ON MANWAY RISERS AT THE DISCRETION OF THE OWNER



CUSTOMER APPROVAL

THE CUSTOMER HAS REVIEWED THIS DRAWING AND VERIFIED THE ACCURACY OF ALL INFORMATION AND DIMENSIONS.

SIGNED: \_\_\_\_\_  
DATE: \_\_\_\_\_

NOTE:  
ALL RIGHTS RESERVED. THIS DRAWING, OR ANY PART THEREOF, MUST NOT BE REPRODUCED IN ANY FORM WITHOUT WRITTEN PERMISSION FROM HIGHLAND TANK. UNLESS OTHERWISE NOTED, HIGHLAND TANK SHALL BE RESPONSIBLE ONLY FOR ITEMS INDICATED ON THIS FABRICATION DRAWING. THE CUSTOMER IS RESPONSIBLE FOR VERIFYING THE CORRECTNESS OF THE TYPE, SIZE, AND LOCATION OF ALL FITTINGS, ACCESSORIES, AND COATINGS SHOWN ON THIS DRAWING.

PROVIDED EQUIPMENT

1. 8"Ø SCH 40 PIPE STUB - INLET
2. 8"Ø SCH 40 PIPE STUB - OUTLET
3. 2" HC - VENT
4. 24"Ø MANWAY FOR STACKABLE RISER
5. STEEL OUTLET DOWNCOMER BAFFLE WITH OPEN TOP
6. STRIKER PLATE
7. SLUDGE BAFFLE - 1/2"
8. UNDERFLOW BAFFLE - 1/2"
9. 8"Ø 45° DIFFUSION ELBOW
10. GREASE DAM - 1/2"
11. 2" OPENING FOR AIR CIRCULATION
12. 36"Ø GRADE-LEVEL MANWAY - SHIPPED LOOSE
13. 24"Ø PVC COVER

PROVIDED EQUIPMENT

- (CONTINUED)
14. 24"Ø x 12" STACKABLE RISER - ALL STACKABLE RISER COMPONENTS ARE PRE-ASSEMBLED AND COMPLETE MANWAY RISER IS SHIPPED LOOSE
  15. 24"Ø x 6" STACKABLE RISER
  16. STACKABLE RISER ADAPTER RING & GASKET
  17. STACKABLE RISER SAFETY SCREEN
  18. DIFFUSION BAFFLE - 1/4"
  19. 48" x 48" WEAR PLATE - 1/4"
  20. (12) CDA-45 CONCRETE DEADMAN
  21. (12) 13'-0" STEEL SAFETY DEADMAN HOLD-DOWN STRAPS WITH TURNBUCKLES AND LINERS



**Highland Tank®**

PASSIVE GREASE INTERCEPTOR  
60,000 GALLON TRIPLE-BASIN

CUSTOMER: \_\_\_\_\_

PROJECT: \_\_\_\_\_

QUOTE NO.: \_\_\_\_\_ ORDER: \_\_\_\_\_

SCALE: \_\_\_\_\_ DATE: 2/15/18 DWG. BY: MGS DWG. NO.: PGI-60000-3

DIMENSION TOLERANCE: ± 1"