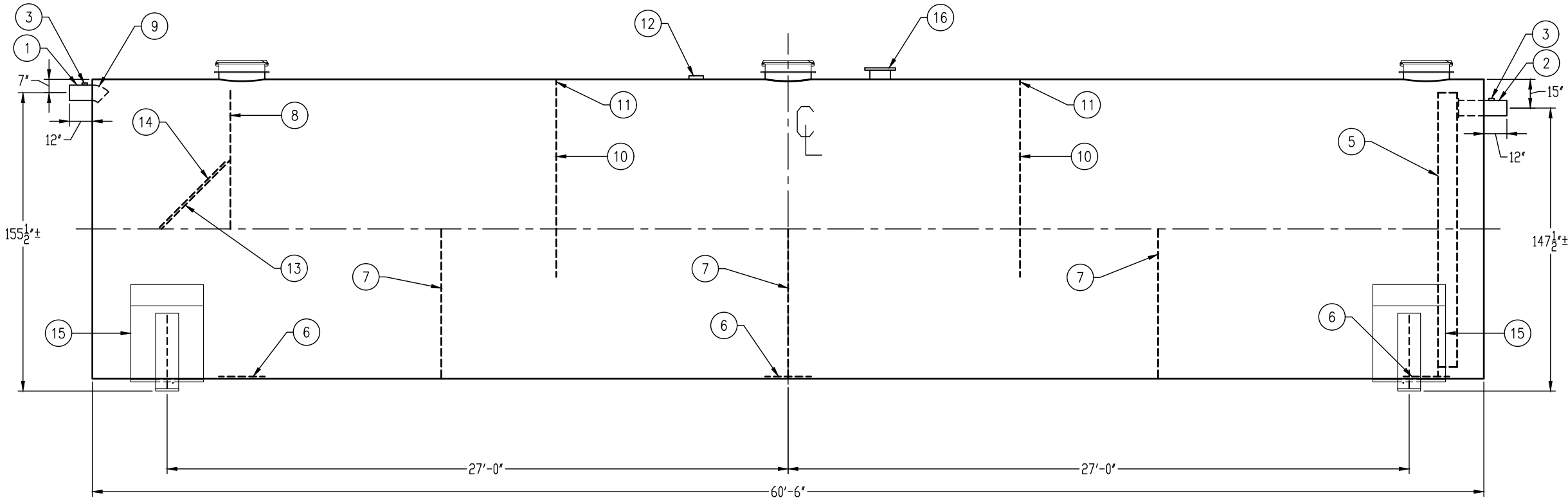
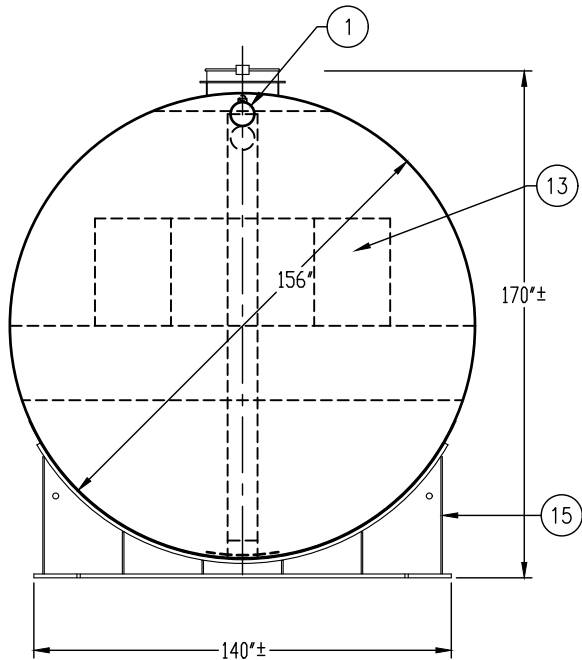
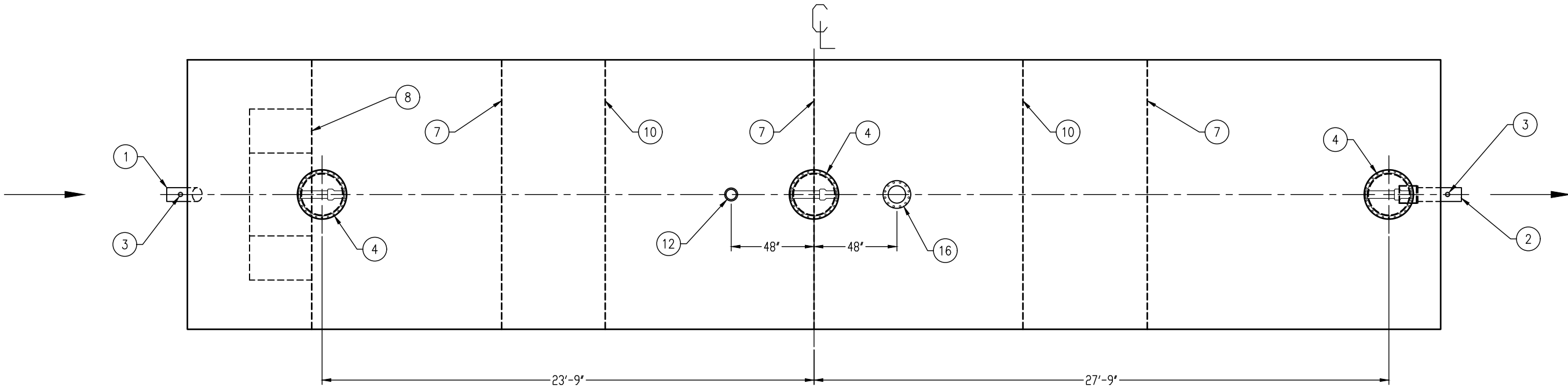


GENERAL SPECIFICATIONS

QUANTITY: ONE (1)
MODEL: PGI-60000-3 AC
CAPACITY: 60,000 GALLONS
TYPE: SINGLE WALL, ABOVEGROUND
MATERIAL: 3/8" CARBON STEEL
LAP FIT AND WELD INTERIOR AND EXTERIOR SEAMS
TANK TEST: 3-5 PSI AIR TEST
SURFACE PREP: SSPC-SP 10 BLAST INTERIOR SURFACES
SSPC-SP 6 BLAST EXTERIOR SURFACES
EXT. COATING: WHITE URETHANE - 3-5 MILS
INT. COATING: CHEMTHANE 4200 PW (15 MILS DFT)
OPERATING PRESSURE: ATMOSPHERIC



CUSTOMER APPROVAL

THE CUSTOMER HAS REVIEWED THIS
DRAWING AND VERIFIED THE ACCURACY
OF ALL INFORMATION AND DIMENSIONS.

SIGNED: _____

DATE: _____

NOTE:
ALL RIGHTS RESERVED. THIS DRAWING, OR ANY PART THEREOF, MUST NOT
BE REPRODUCED IN ANY FORM WITHOUT WRITTEN PERMISSION FROM
HIGHLAND TANK UNLESS OTHERWISE NOTED. HIGHLAND TANK SHALL BE
RESPONSIBLE ONLY FOR ITEMS INDICATED ON THIS FABRICATION DRAWING.
THE CUSTOMER IS RESPONSIBLE FOR VERIFYING THE CORRECTNESS OF
THE TYPE, SIZE, AND LOCATION OF ALL FITTINGS, ACCESSORIES, AND
COATINGS SHOWN ON THIS DRAWING.

PROVIDED EQUIPMENT

1. 8"Ø SCH 40 PIPE STUB - INLET
2. 8"Ø SCH 40 PIPE STUB - OUTLET
3. 2" HC - VENT
4. 24"Ø MANWAY WITH FLANGED EASY-ACCESS HATCH
5. STEEL OUTLET DOWNCOMER BAFFLE WITH OPEN TOP
6. STRIKER PLATE
7. SLUDGE BAFFLE - 3/8"
8. UNDERFLOW BAFFLE - 3/8"

PROVIDED EQUIPMENT

(continued)

9. 8"Ø 45° DIFFUSION ELBOW
10. GREASE DAM - 3/8"
11. 2" OPENING FOR AIR CIRCULATION
12. 6" HC - NORMAL TANK VENT
13. DIFFUSION BAFFLE - 1/4"
14. 48" x 48" WEAR PLATE - 1/4"
15. 6" HIGH UL SADDLE - SHIP LOOSE
16. 10"Ø-150# FFSO FLANGE FOR EMERGENCY VENT



Highland Tank®

PASSIVE GREASE INTERCEPTOR
60,000 GALLON TRIPLE-BASIN

CUSTOMER: _____

PROJECT: _____

QUOTE NO.: _____

SCALE: _____

DATE: _____

DWG. BY: _____

DWG. NO.: _____

ORDER: _____

DIMENSION TOLERANCE: ± 1"

NTS

2/15/18

MGS

PGI-60000-3 AC