



## Ladders, Stairs, Platforms and Walkways

HT-1117

Aboveground storage tanks are designed and engineered to meet the demanding needs of many industries. They provide a sensible and safe solution for the storage of petroleum products and chemicals at bulk plants, transportation facilities, industrial sites, military bases and airports.

Depending on the size and function of the tank, access to fill ports, pumps, vents and access manways is required. Highland Tank custom fabricates ladders, platforms, stairs and walkways to provide safe convenient access to your tanks no matter the height or configuration.

All access equipment is fabricated to OSHA standards using carbon steel. Standard paint color is safety yellow with other colors available. Hot-dipped galvanizing is available as an option for extra protection. Step/stair treads, platforms and walkways are non-slip fiberglass grating. Stainless steel construction is also available.



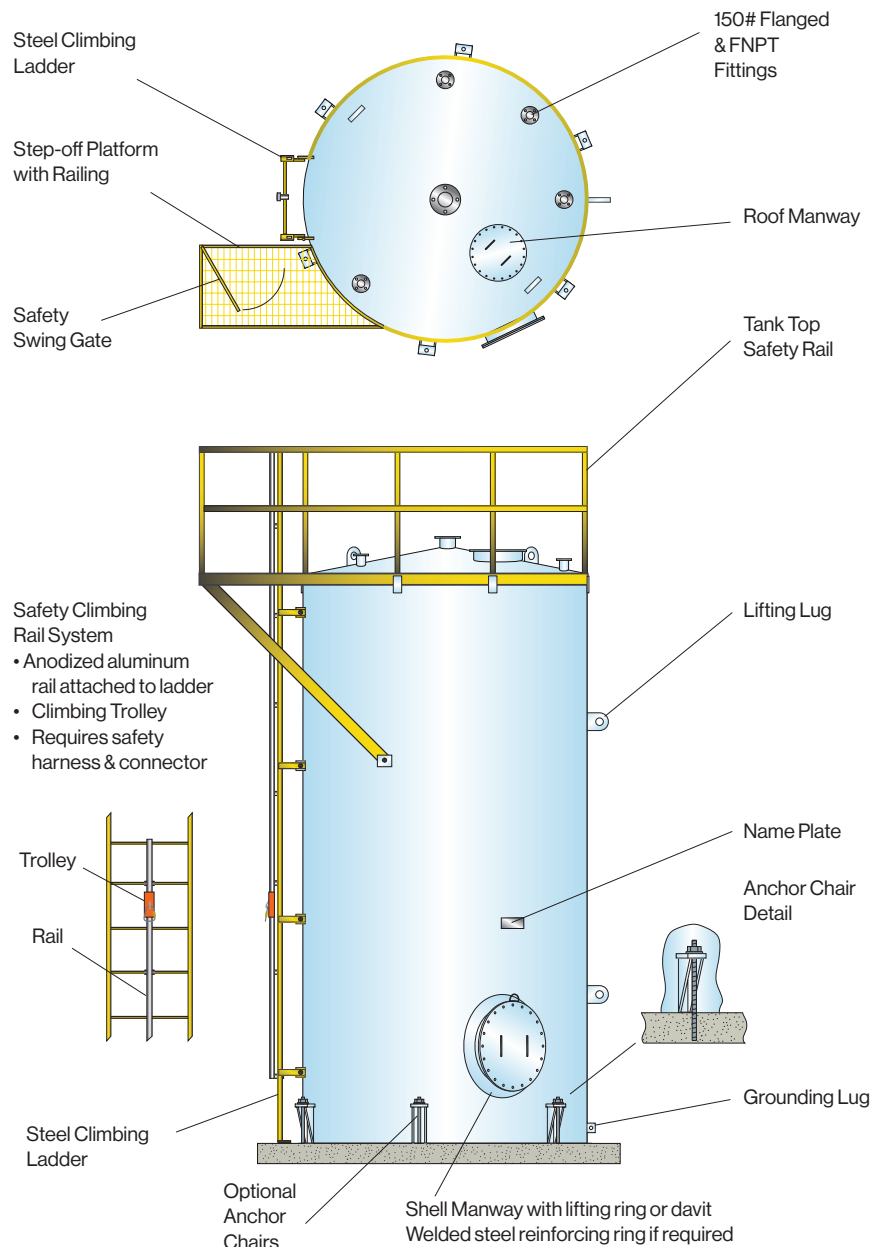
# Ladder Details

Ladders, platforms and walkways are designed to comply with strict OSHA regulations. Carbon steel fabrication with a painted finish is standard. Stainless steel or galvanized finish is available upon request.

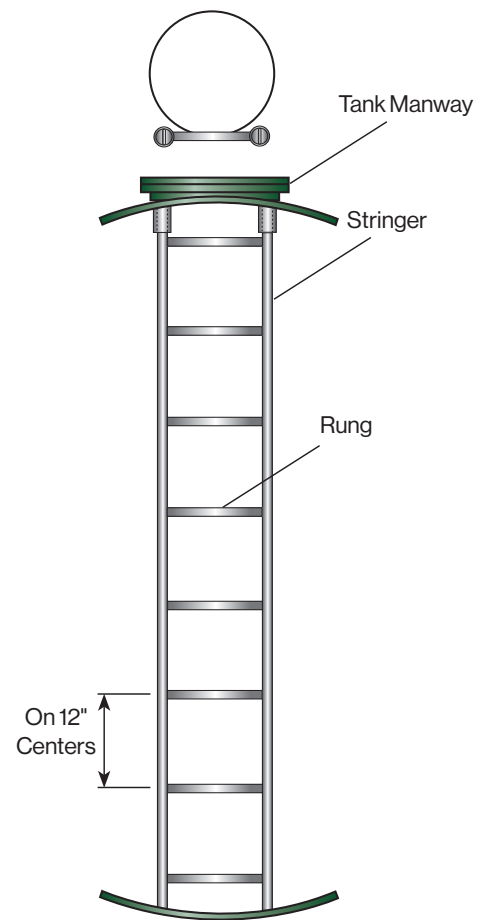
OSHA-compliant internal ladders measure 16" wide and external ladders measure 24" wide. Interior access ladders require a properly sized access manway for safety clearance.

Ladders for tank access above 24" require a safety climbing system attached to the tank. Mounting brackets and other structural accommodations can be factory-fitted to facilitate field installation. Handrails and provisions for anchoring to a support pad are also included.

## External Ladders



## Internal Ladders



# Stairs and Ships Ladder Details

Highland Tank fabricates standard and custom stairs and ships ladders to facilitate access to tank fill ports and manways.

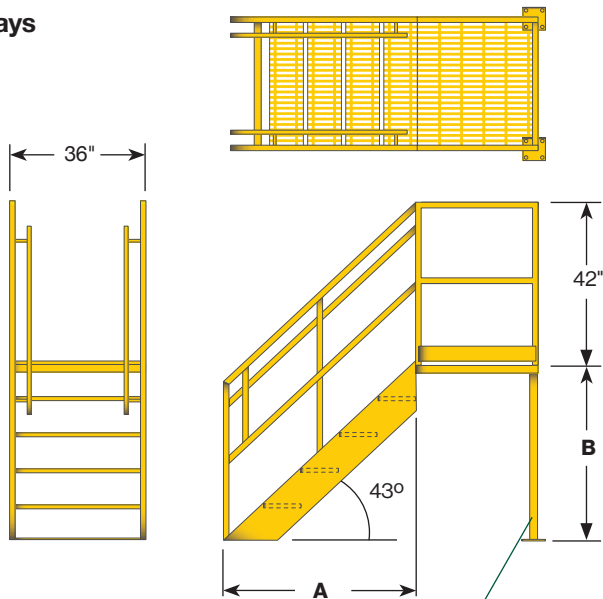
Stairs Model	A	B
S28500	30-5/8"	28-1/2"
S38000	40-13/16"	38"
S47500	51"	47-1/2"
S57000	61-3/16"	57"
S66500	71-3/8"	66-1/2"
S76000	81-9/16"	76"
S85500	91-3/4"	85-1/2"
S95000	101-15/16"	95"
S10450	112-1/8"	104-1/2"
S11400	122-5/16"	114"
S12350	132-1/2"	123-1/2"
S13300	142-11/16"	133"
S14250	152-7/8"	142-1/2"
S15250	163-1/16"	152"
S16150	173-1/4"	161-1/2"
S17100	183-7/16"	171"

OSHA standard design stairways provide access to the top of the tank from a platform attached to one end of the tank and include non-skid fiberglass grating on the stair treads and platforms. Handrails and provisions for anchoring stairway to a support pad are also included.

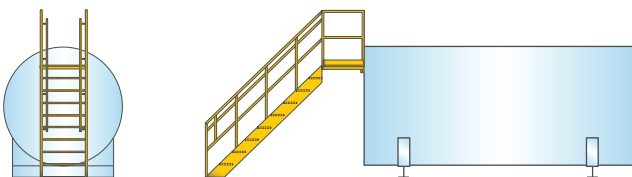
In addition, we can manufacture Ships Ladders for job sites with limited space and can custom fabricate ladders, platforms and walkways to suit your site-specific needs.

Ships Ladder Model	A	B
SL28500	16-7/16"	28-1/2"
SL47500	27-7/16"	47-1/2"
SL76000	44-3/16"	76"
SL85500	49-3/8"	85-1/2"
SL10375	59-13/16"	103-3/4"
SL11400	66-13/16"	114"
SL12400	71-13/16"	124"
SL13900	80-3/16"	139"

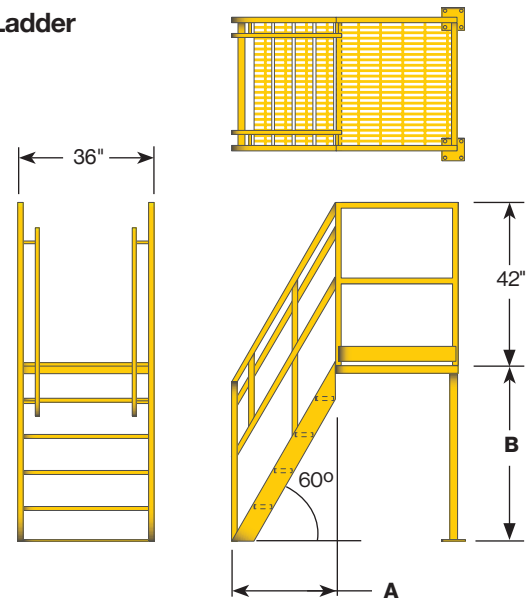
## Stairways



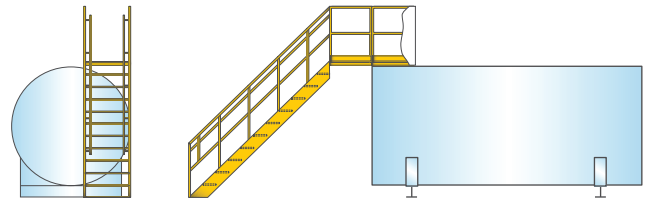
## Standard Design Stairs



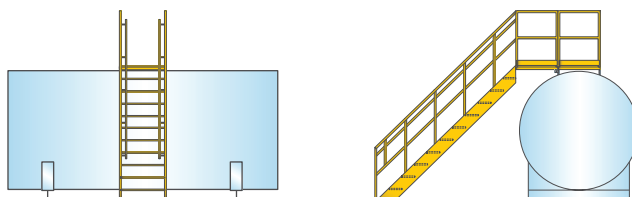
## Ships Ladder



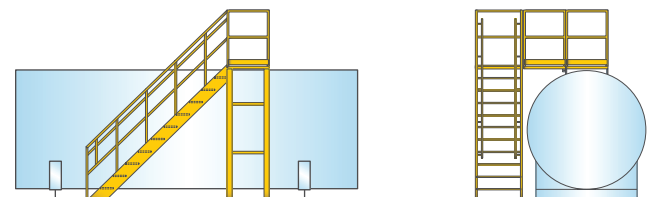
## Top of Tank Access Perpendicular to Tank Head



## Top of Tank Access Parallel to Tank Head



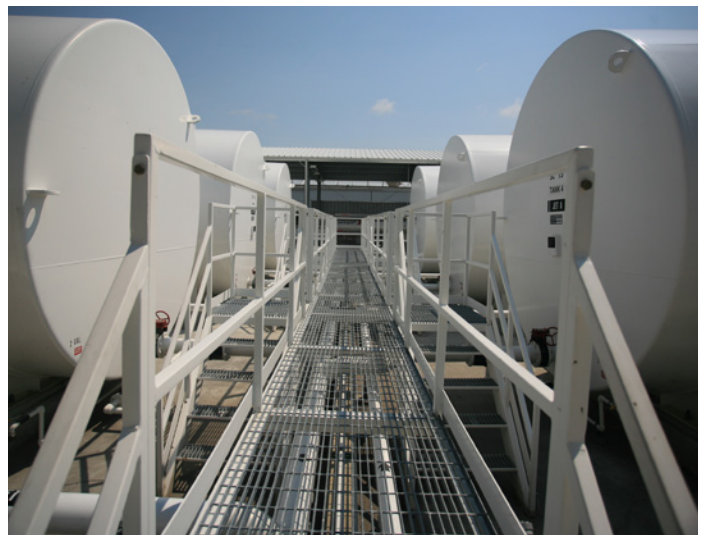
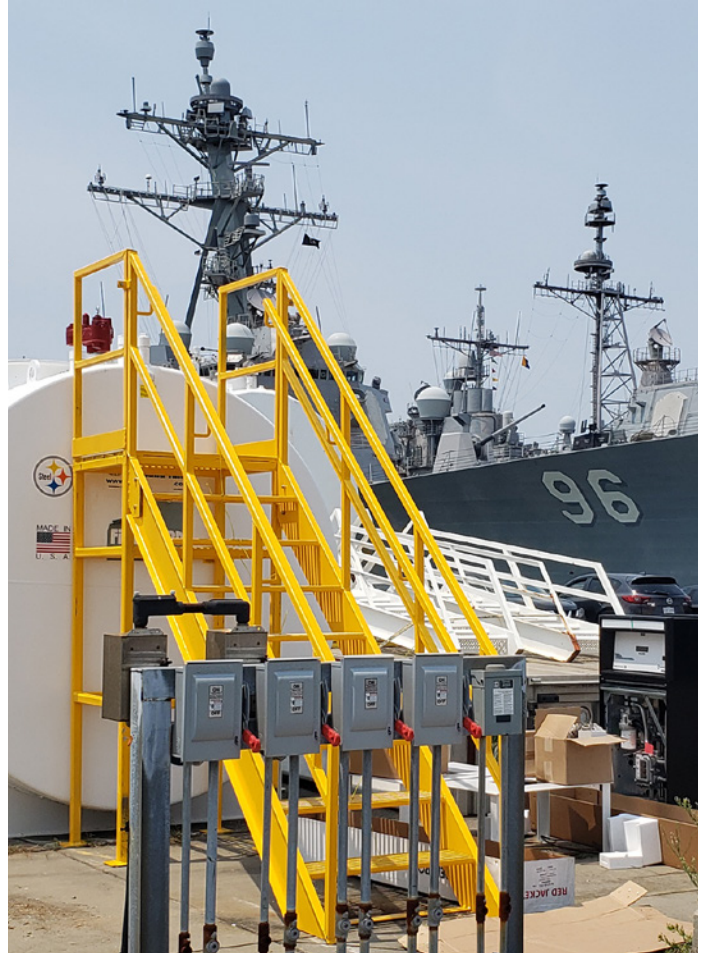
## Top of Tank Access Parallel to Tank Head





# Walkways

With all custom fabricated ladders, platforms, stairs and walkways, Highland Tank assembles the complete system in the factory to assure fit and function before painting and delivery. Mounting brackets and other structural accommodations are factory-fit to facilitate field installation. Handrails and provisions for anchoring to a support pad are also included (anchor bolts provided by others).



## Highland Tank<sup>®</sup>

### Stoystown, PA

One Highland Rd.  
Stoystown, PA 15563  
(814) 893-5701

### Manheim, PA

4535 Elizabethtown Rd.  
Manheim, PA 17545  
(717) 664-0600

### Watervliet, NY

958 19th St.  
Watervliet, NY 12189  
(518) 273-0801

### Greensboro, NC

2700 Patterson St.  
Greensboro, NC 27407  
(336) 218-0801

### Friedens, PA

1510 Stoystown Rd.  
Friedens, PA 15541  
(814) 443-6800

### Clarkston, MI

4701 White Lake Rd.  
Clarkston, MI 48346  
(248) 625-8700

### Mancelona, MI

9517 Lake St.  
Mancelona, MI 49659  
(231) 587-8412

