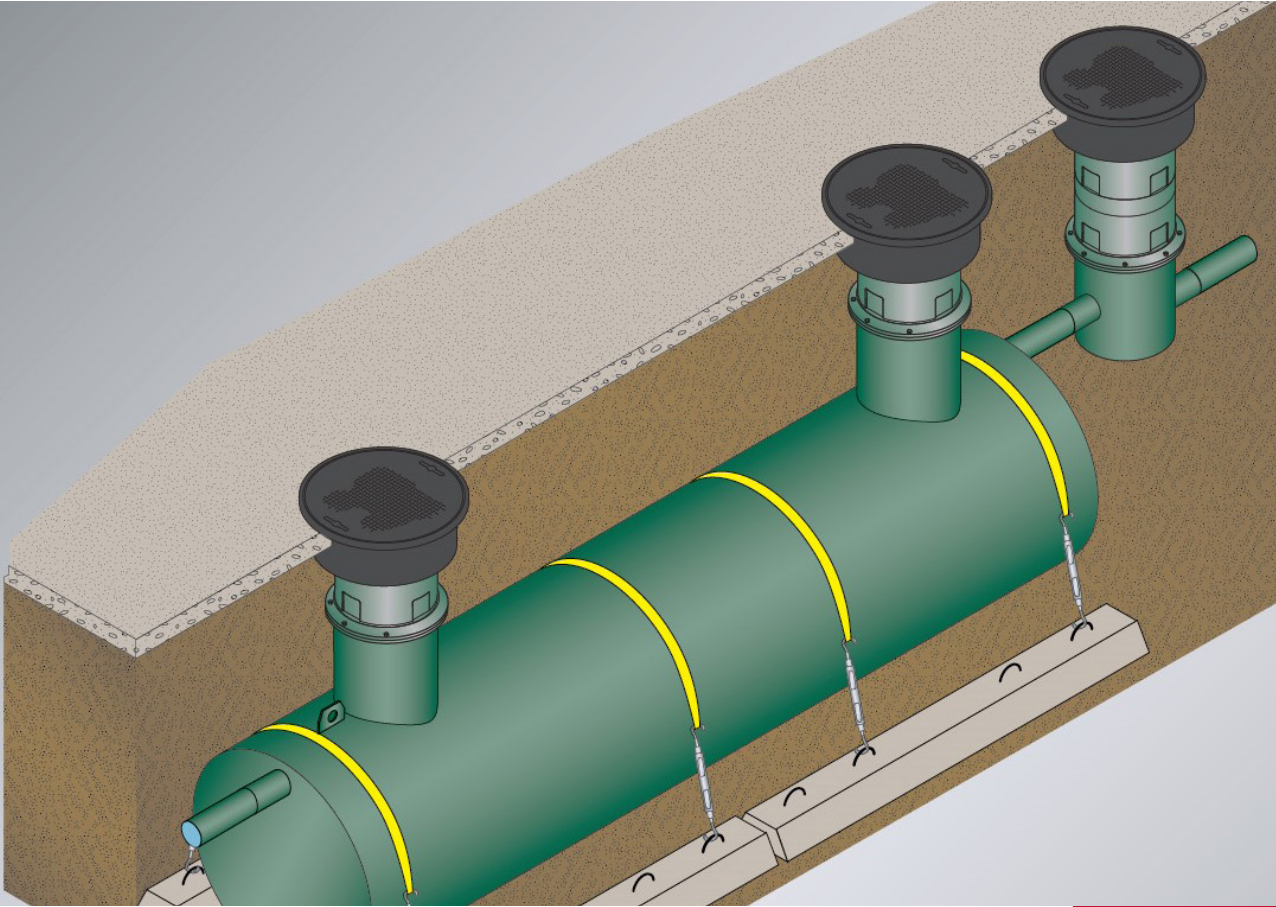


**Built on Tradition**



**Highland Tank®**



## Sample Ports

HT-2824

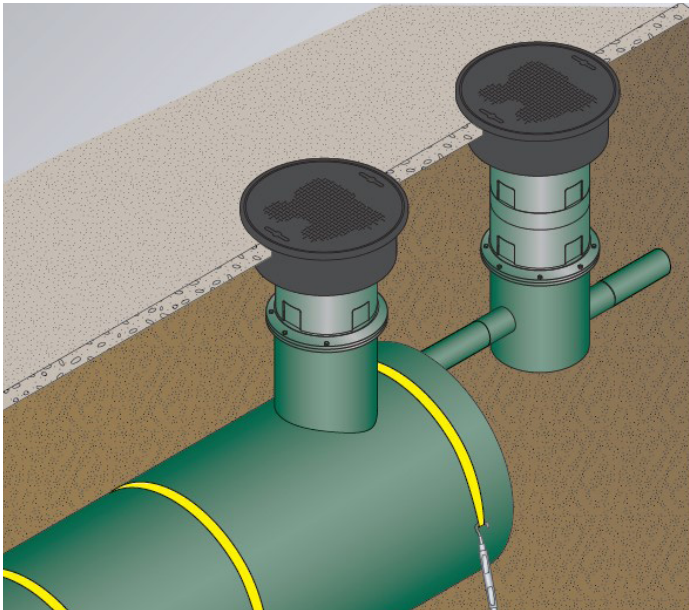
Efficient maintenance and operation of many wastewater treatment systems require sampling outflow for FOG concentration. Highland Tank offers interceptor-mounted, in-line and free-standing sampling ports to enable pretreatment inspectors to collect representative sample of the wastewater being discharged to the sanitary system.

We offer sample ports for both underground and aboveground grease interceptors. These sample ports can also be used on oil/sand interceptors, and oil/water separators.

Dimensions for underground and aboveground cylindrical sample port: 24" diameter x 16" height carbon steel sample port

# Drawing & Details

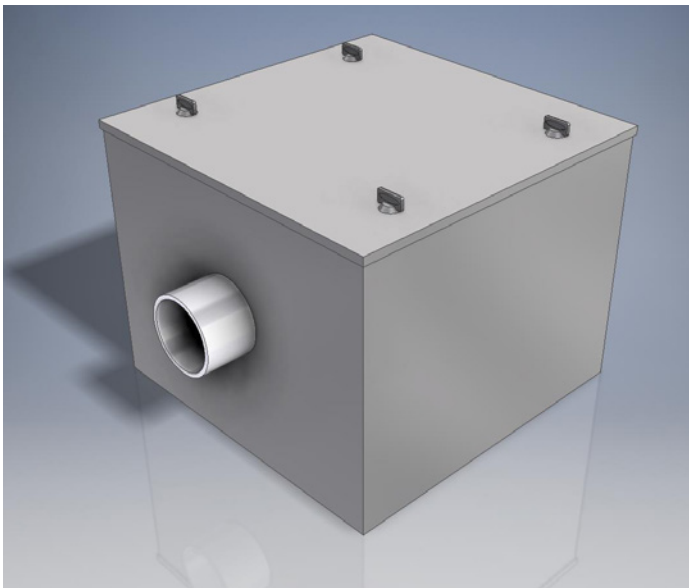
## Sample Ports for Hydromechanical & Gravity Flow Grease Interceptors



Sample box for Gravity Flow Interceptor



Dimensions for underground and aboveground cylindrical carbon steel sample port: 24" diameter x 16" height



Sample box for Hydromechanical Grease Interceptor



Dimensions for aboveground cylindrical stainless steel sample port: 20" x 20" x 16"



# Highland Tank®

**Stoystown, PA**  
One Highland Rd.  
Stoystown, PA 15563  
(814) 893-5701

**Manheim, PA**  
4535 Elizabethtown Rd.  
Manheim, PA 17545  
(717) 664-0600

**Watervliet, NY**  
958 19th St.  
Watervliet, NY 12189  
(518) 273-0801

**Greensboro, NC**  
2700 Patterson St.  
Greensboro, NC 27407  
(336) 218-0801

**Friedens, PA**  
1510 Stoystown Rd.  
Friedens, PA 15541  
(814) 443-6800

**Clarkston, MI**  
4701 White Lake Rd.  
Clarkston, MI 48346  
(248) 625-8700

**Mancelona, MI**  
9517 Lake St.  
Mancelona, MI 49659  
(231) 587-8412

