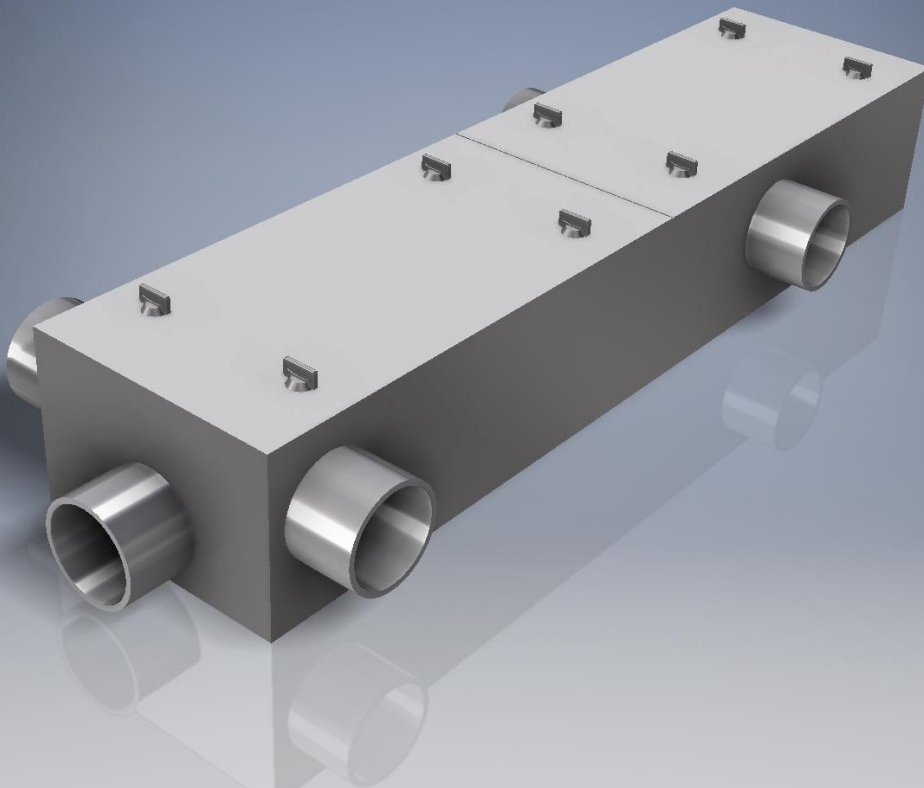


**Built on Tradition**



**Highland Tank®**



## **Modular Lint Interceptor**

HT-2820

Highland Tank lint interceptors are installed on drain lines of industrial washing machines. They are designed to trap large quantities of sewer clogging lint and other solids often associated with commercial laundries.

Highland Tank lint interceptors are constructed of stainless steel. These modular systems can be connected together in a series for more capacity.

The lint interceptor units are easy to install and easy to clean. Highland Tank lint interceptors are available for on floor or flush-in-floor installations with bolt on or hinged deck plate covers for ease of inspection and maintenance. Optional H-20 covers available upon request.

### **Some applications for the lint interceptor:**

- Hotels
- Prisons
- Laundromats
- Hospitals
- Universities

**Simple Design,  
Quality Construction  
& Easy Operation**

# Drawing & Details

A wide variety of options and accessories are also available to further customize a Shelter Tank to your requirements.

Some of the items available include:

- Compartment bulkhead
- Tank insulation
- Manway with bolted and gasketed lid
- Dike piping sleeve
- Emergency vent
- External ladder/stairway
- Pump platform
- Platform/walkway with handrails
- Finish paint
- Internal ladder(s)
- Internal coating
- Level sensing/gauging system
- Overfill/spill containment chamber



## Highland Tank®

**Stoystown, PA**

One Highland Rd.  
Stoystown, PA 15563  
(814) 893-5701

**Manheim, PA**

4535 Elizabethtown Rd.  
Manheim, PA 17545  
(717) 664-0600

**Watervliet, NY**

958 19th St.  
Watervliet, NY 12189  
(518) 273-0801

**Greensboro, NC**

2700 Patterson St.  
Greensboro, NC 27407  
(336) 218-0801

**Friedens, PA**

1510 Stoystown Rd.  
Friedens, PA 15541  
(814) 443-6800

**Clarkston, MI**

4701 White Lake Rd.  
Clarkston, MI 48346  
(248) 625-8700

**Mancelona, MI**

9517 Lake St.  
Mancelona, MI 49659  
(231) 587-8412