

HIGHLAND TANK STANDARD EQUIPMENT	
1	FLANGED INLET
2	UNDERFLOW BAFFLE
3	SEDIMENT CHAMBER
4	STRIKER PLATE
5	SLUDGE BAFFLE
6	CORELLA™ PARALLEL CORRUGATED PLATE COALESCER
7	PETROSCREEN COALESCER (HTC MODEL ONLY)
8	OUTLET DOWNCOMER PIPE
9	FLANGED OUTLET
10	2" INTERFACE LEVEL SENSOR FITTING WITH EXTENSION PIPE
11	4" OIL PUMPOUT FITTING WITH INTERNAL PIPE EXTENSION PIPE
12	GAUGE PORT
13	24" FLANGED MANWAY AND COVER WITH BOLT ON EXTENSION (36" ON 60K SIZE)

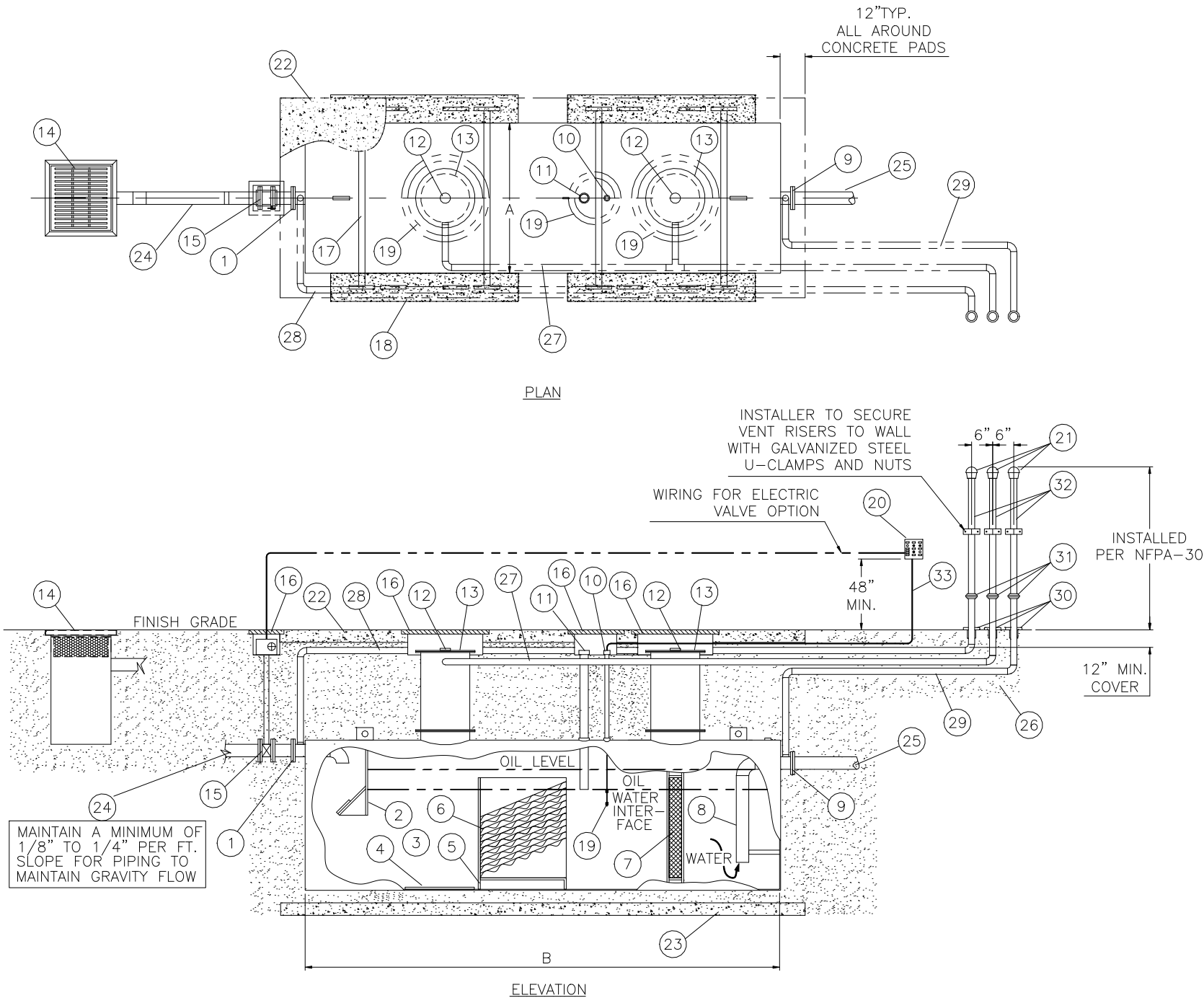
HIGHLAND TANK OPTIONAL EQUIPMENT	
14	HIGHLAND CB SERIES SOLIDS CATCH BASIN
15	INLET VALVE (MANUAL/ELECTRIC OPERATED)
16	HIGHLAND GLM SERIES GRADE MANWAY WITH COVER
17	HOLD DOWN STRAPS
18	HIGHLAND CDA SERIES CONCRETE DEADMAN HOLD DOWN ANCHORS
19	HIGHLAND HTF/HTSF SERIES OIL INTERFACE LEVEL SENSOR
20	ALARM CONTROL PANEL
21	MUSHROOM VENTS

INSTALLER PROVIDED EQUIPMENT	
22	CONCRETE GRADE PAD
23	CONCRETE HOLD DOWN PAD
24	INLET PIPING
25	OUTLET PIPING
26	BACKFILL AS REQUIRED
27	MANWAY VENT PIPING
28	INLET VENT PIPING
29	OUTLET VENT PIPING
30	EPOXY COATED STEEL RISER CLAMPS
31	GALVANIZED UNIONS
32	GALVANIZED STEEL VENT PIPES ABOVEGRADE
33	CONDUIT AND WIRING TO PANEL


NOTES
1. UNDERGROUND COATING SYSTEM OPTIONS ARE THE HIGHGUARD, ACT-100-U, AND S.T.I.P. 3
2. MANHOLE AND PIPE EXTENSION LENGTHS VARY PER TANK SIZE AND DEPTH
3. LEVEL SENSOR AND OIL PUMPOUT PIPE EXTENSIONS ARE TO EXTEND TO THE SAME ELEVATION AS THE MANWAY EXTENSION
4. ALL VENT PIPES SLOPED TO DRAIN BACK TO SEPARATOR

OWS DIMENSION LEGEND			
TANK SIZE	(A) DIA.	(B) LENGTH.	
1000	48"	10'-9"	
1500	48"	16'-0"	
2000	64	12'-0"	
3000	64"	18'-0"	
4000	64	24'-0"	
5000	72"	23'-10"	
6000	72"	28'-8"	
7000	84"	24'-4"	
8000	84"	28'-0"	
9000	96"	24'-0"	

OWS DIMENSION LEGEND			
TANK SIZE	(A) DIA.	(B) LENGTH.	
10000	96"	26'-8"	
12000	96"	32'-0"	
15000	120"	25'-6"	
20000	126"	31'-0"	
25000	126"	38'-9"	
30000	126"	46'-6"	
40000	144"	47'-3"	
50000	144"	59'-6"	
60000	156"	60'-6"	



NOTE: ALL RIGHTS RESERVED. THIS DRAWING MUST NOT BE REPRODUCED IN ANY FORM WITHOUT THE WRITTEN PERMISSION OF HIGHLAND TANK®. HIGHLAND TANK® SHALL BE RESPONSIBLE ONLY FOR ITEMS INDICATED ON THIS FABRICATION DRAWING UNLESS OTHERWISE NOTED. CUSTOMER IS RESPONSIBLE FOR VERIFYING CORRECTNESS OF SIZE AND LOCATION OF FITTINGS, ACCESSORIES, AND COATINGS SHOWN ON THIS DRAWING.



Highland Tank

UNLESS NOTED, TOLERANCES ARE +/- 1"

TYPICAL SINGLE WALL OIL WATER SEPARATOR INSTALLATION
1,000 GALLON THRU 60,000 GALLON

CUSTOMER:

PROJECT:

QUOTE NO:

CHK'D BY:

SCALE: NTS

DATE:

DWG. BY:

DWG. NO:
1K-60KOWSSWUGINST