

## HIGHLAND TANK STANDARD EQUIPMENT

- |    |  |
|----|--|
| 1  | FLANGED INLET  |
| 2  | UNDERFLOW BAFFLE   |
| 3  | SEDIMENT CHAMBER   |
| 4  | STRIKER PLATE  |
| 5  | SLUDGE BAFFLE  |
| 6  | CORELLA™ PARALLEL CORRUGATED PLATE COALESCER             |
| 7  | PETROSCREEN COALESCER (HTC MODEL ONLY)                   |
| 8  | OUTLET DOWNCOMER PIPE                                    |
| 9  | FLANGED OUTLET   |
| 10 | 2" INTERFACE LEVEL SENSOR FITTING WITH EXTENSION PIPE    |
| 11 | 4" OIL PUMPOUT FITTING WITH INTERNAL PIPE EXTENSION PIPE |
| 12 | GAUGE PORT   |
| 13 | 18" FLANGED MANWAY AND COVER WITH BOLT ON EXTENSION      |

## HIGHLAND TANK OPTIONAL EQUIPMENT

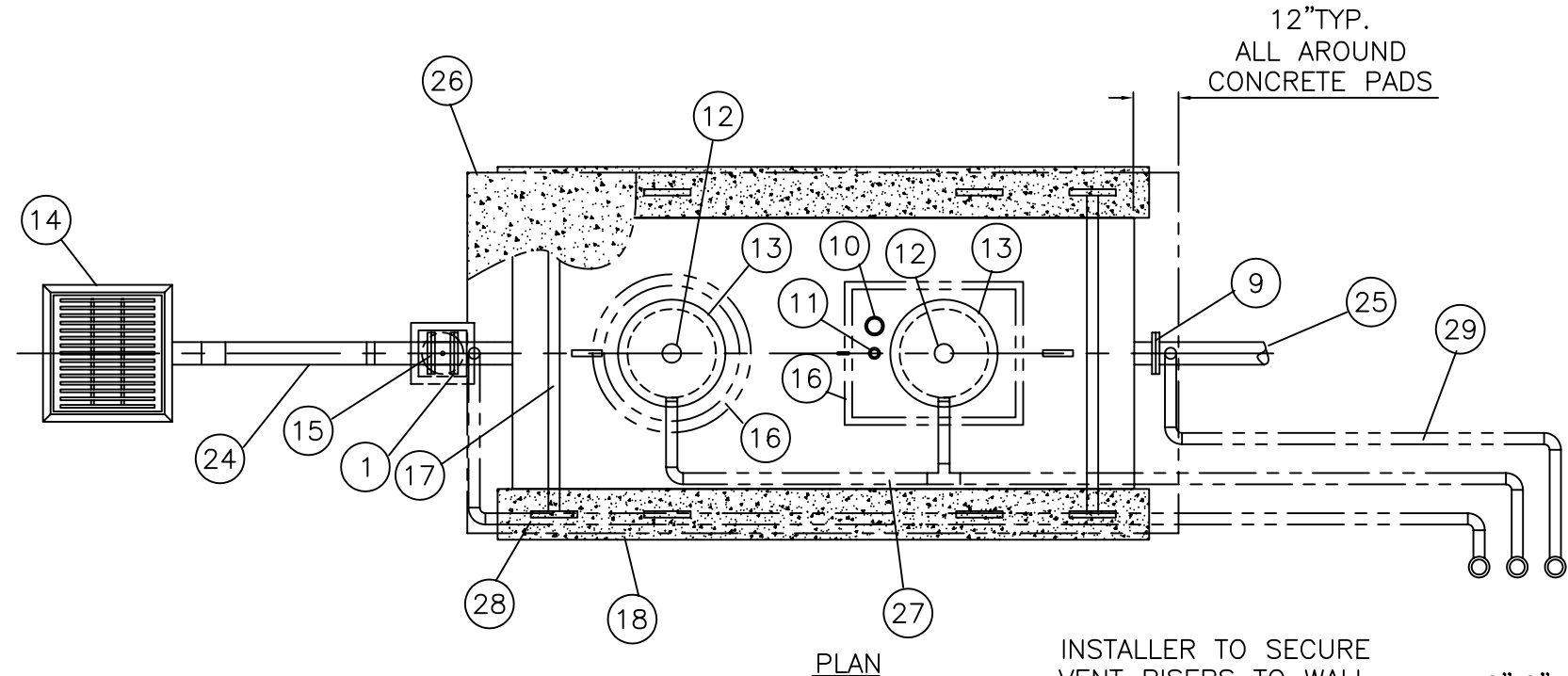
- |    |  |
|----|--|
| 14 | HIGHLAND CB SERIES SOLIDS CATCH BASIN                  |
| 15 | INLET VALVE  |
| 16 | HIGHLAND GLM SERIES GRADE MANWAY WITH COVER            |
| 17 | HOLD DOWN STRAPS                                       |
| 18 | HIGHLAND CDA SERIES CONCRETE DEADMAN HOLD DOWN ANCHORS |
| 19 | HIGHLAND HTF/HTSF SERIES OIL INTERFACE LEVEL SENSOR    |
| 20 | ALARM CONTROL PANEL                                    |
| 21 | MUSHROOM VENTS   |

## INSTALLER PROVIDED EQUIPMENT

- |    |  |
|----|--|
| 22 | CONCRETE GRADE PAD                     |
| 23 | CONCRETE HOLD DOWN PAD                 |
| 24 | INLET PIPING                           |
| 25 | OUTLET PIPING                          |
| 26 | BACKFILL AS REQUIRED                   |
| 27 | MANWAY VENT PIPING                     |
| 28 | INLET VENT PIPING                      |
| 29 | OUTLET VENT PIPING                     |
| 30 | EPOXY COATED STEEL RISER CLAMPS        |
| 31 | GALVANIZED UNIONS                      |
| 32 | GALVANIZED STEEL VENT PIPES ABOVEGRADE |

## NOTES

1. UNDERGROUND COATING SYSTEM OPTIONS ARE THE HIGHGUARD, ACT-100-U, AND S.T.I.P. 3
2. MANHOLE AND PIPE EXTENSION LENGTHS VARY PER TANK SIZE AND DEPTH
3. LEVEL SENSOR AND OIL PUMPOUT PIPE EXTENSIONS ARE TO EXTEND TO THE SAME ELEVATION AS THE MANWAY EXTENSION
4. ALL VENT PIPES SLOPED TO DRAIN BACK TO SEPARATOR



NOTE: ALL RIGHTS RESERVED. THIS DRAWING MUST NOT BE REPRODUCED IN ANY FORM WITHOUT THE WRITTEN PERMISSION OF HIGHLAND TANK®. HIGHLAND TANK® SHALL BE RESPONSIBLE ONLY FOR ITEMS INDICATED ON THIS FABRICATION DRAWING UNLESS OTHERWISE NOTED. CUSTOMER IS RESPONSIBLE FOR VERIFYING CORRECTNESS OF SIZE AND LOCATION OF FITTINGS, ACCESSORIES, AND COATINGS SHOWN ON THIS DRAWING.

