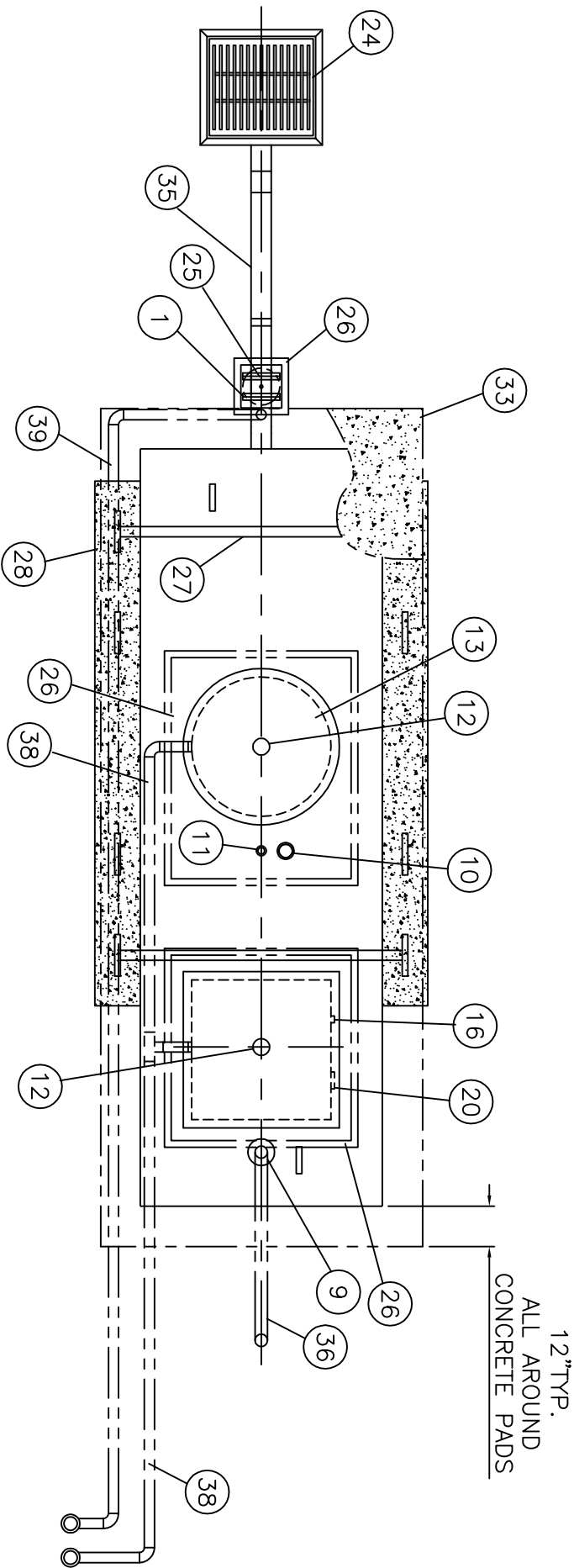


HIGHLAND TANK STANDARD EQUIPMENT	
1	FLANGED INLET
2	UNDERFLOW BAFFLE
3	SEDIMENT CHAMBER
4	STRIKER PLATE
5	SLUDGE BAFFLE
6	CORELLA™ PARALLEL CORRUGATED PLATE COALESCER
7	PETROSCREEN COALESCER (HTC MODEL ONLY)
8	WATER TRANSFER PIPING
9	FLANGED EFFLUENT PUMPOUT
10	2" INTERFACE LEVEL SENSOR FITTING WITH EXTENSION PIPE
11	4" OIL PUMPOUT FITTING WITH INTERNAL PIPE EXTENSION PIPE
12	GAUGE PORT
13	30" FLANGED MANWAY AND COVER WITH BOLT ON EXTENSION
14	DUPLEX SUBMERSIBLE PUMP SYSTEM & PIPING
15	ENM-10 TILT SWITCH WATER SENSORS
16	2" LEVEL SENSOR WIRING FITTING
17	BULKHEAD
18	WATER EFFLUENT CHAMBER
19	RECTANGULAR PUMP MANHOLE
20	4" PUMP WIRING FITTING
HIGHLAND TANK OPTIONAL EQUIPMENT	
21	HIGHLAND HTF/HTSF SERIES OIL INTERFACE LEVEL SENSOR
22	ALARM CONTROL PANEL
23	MUSHROOM VENTS
24	HIGHLAND CB SERIES SOLIDS CATCH BASIN
25	INLET VALVE
26	HIGHLAND GLM SERIES GRADE MANWAY WITH COVER
27	HOLD DOWN STRAPS
28	HIGHLAND CDA SERIES CONCRETE DEADMAN HOLD DOWN ANCHORS
INSTALLER PROVIDED EQUIPMENT	
29	CONDUIT AND WIRING TO PANEL
30	EPOXY COATED STEEL RISER CLAMPS
31	GALVANIZED UNIONS
32	GALVANIZED STEEL VENT PIPES ABOVEGRADE
33	CONCRETE GRADE PAD
34	CONCRETE HOLD DOWN PAD
35	INLET PIPING
36	EFFLUENT PUMPOUT PIPING
37	BACKFILL AS REQUIRED
38	MANWAY VENT PIPING
39	INLET VENT PIPING



12" TYP.  
ALL AROUND  
CONCRETE PADS

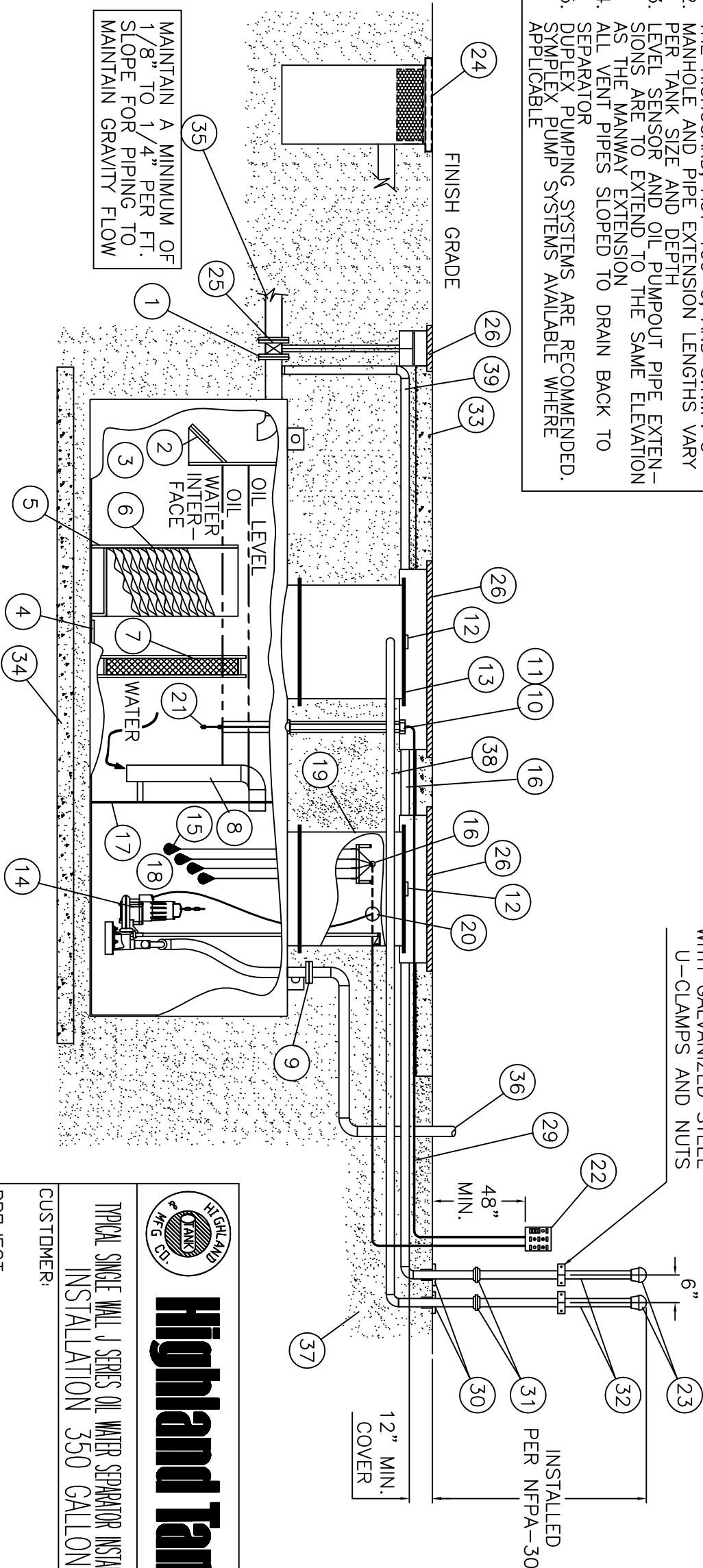
NOTE: ALL RIGHTS RESERVED. THIS DRAWING MUST NOT BE REPRODUCED IN ANY FORM WITHOUT THE WRITTEN PERMISSION OF HIGHLAND TANK®. HIGHLAND TANK® SHALL BE RESPONSIBLE ONLY FOR ITEMS INDICATED ON THIS FABRICATION DRAWING UNLESS OTHERWISE NOTED. CUSTOMER IS RESPONSIBLE FOR VERIFYING CORRECTNESS OF SIZE AND LOCATION OF FITTINGS, ACCESSORIES, AND COATINGS SHOWN ON THIS DRAWING.

NOTES

1. UNDERGROUND COATING SYSTEM OPTIONS ARE THE HIGHGUARD, ACT-100-U, AND S.T.I.P.
2. MANHOLE AND PIPE EXTENSION LENGTHS VARY PER TANK SIZE AND DEPTH
3. LEVEL SENSOR AND OIL PUMPOUT PIPE EXTENSIONS ARE TO EXTEND TO THE SAME ELEVATION AS THE MANWAY EXTENSION
4. ALL VENT PIPES SLOPED TO DRAIN BACK TO SEPARATOR
5. DUPLEX PUMPING SYSTEMS ARE RECOMMENDED. SYMPLEX PUMP SYSTEMS AVAILABLE WHERE APPLICABLE

PLAN

INSTALLER TO SECURE  
VENT RISERS TO WALL  
WITH GALVANIZED STEEL  
U-CLAMPS AND NUTS



MAINTAIN A MINIMUM OF  
1/8" TO 1/4" PER FT.  
SLOPE FOR PIPING TO  
MAINTAIN GRAVITY FLOW

ELEVATION



**Highland Tank®**

TYPICAL SINGLE WALL V SERIES OIL WATER SEPARATOR INSTALLATION  
INSTALLATION 350 GALLON

CUSTOMER:

PROJECT:

QUOTE NO:

SCALE: DATE: NTS

CHK'D BY:

DWG. BY:

350JOWSSWUGINST