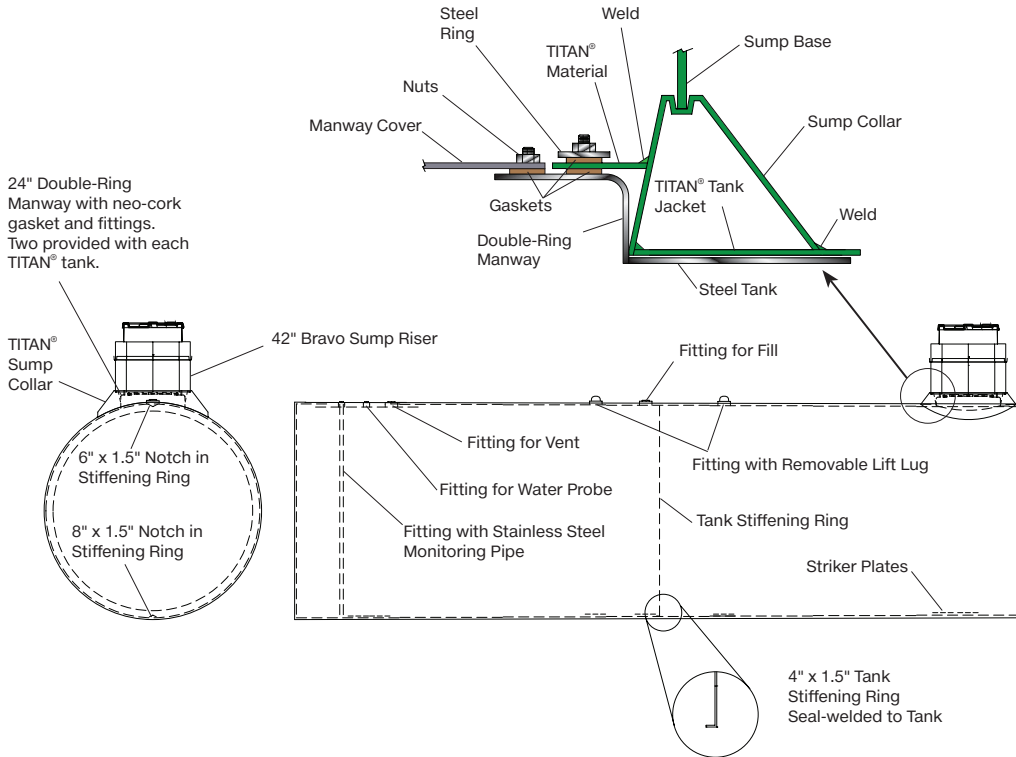


## Sump Mounting Options

HT - 5516

### Titan®



The sump base is standard with the Titan® with sump product and is optimal on a regular Titan® product.

The fiberglass sump is connected to the base with a special epoxy provided with the tank and sump.

The epoxy mount kit is included with the sump base/ sump combination.

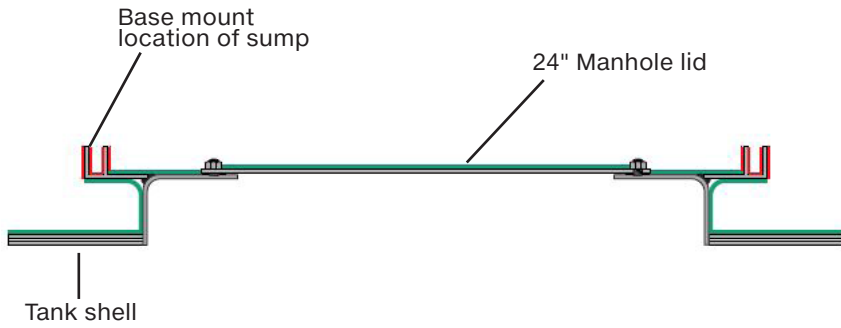


Mount Kit



Sump Kit

# For Highguard - ACT-100U - STI P3



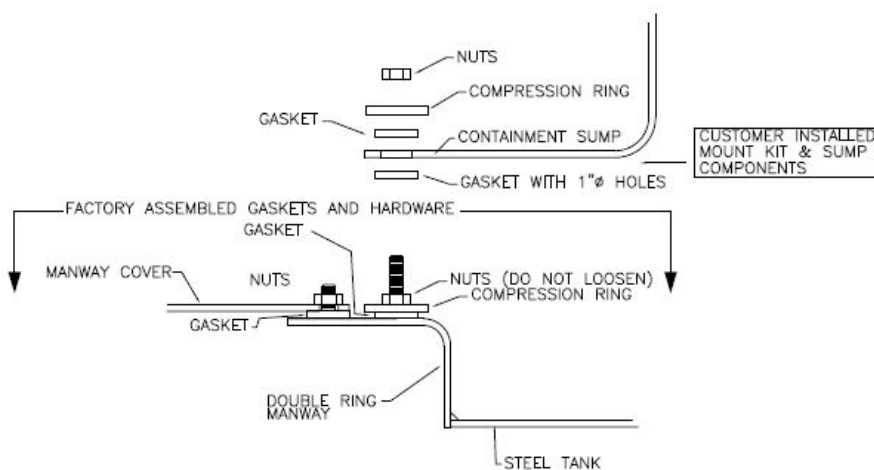
- Coated with fiberglass resin
- Polyurethane coating

This method is used when connecting a fiberglass sump to a Highland Tank. The sump should not have a base included.

A fiberglass sump can be fiberglassed to the trough with the resin kit supplied by the sump manufacturer.

## Other Options

### Double Ring Manway Mount Kit



Double ring manway mount kit includes a bolted cover.

All installation instructions available on our website: [www.highlandtank.com](http://www.highlandtank.com).