



options & accessories

grade level manways

HT-1111

PRODUCT DETAILS

Highland Tank fabricates round and rectangular Grade Level Manways (GLM) in a variety of sizes to meet most job-site requirements with the AASHTO HS20-44 rating upon request.

Round GLMs are available in eight (8) standard sizes ranging from 12" to 48" diameter. Custom diameters and depths are available upon request. Rectangular GLMs are based on a modular design and custom fabricated to site-specific requirements.

Designed around a 1 to 5 door configuration, rectangular GLMs are available in widths from 48" to 72" and lengths from 48" to 150" in 6" increments. For example, a 48" by 90" rectangular GLM would have 3 doors or lids.

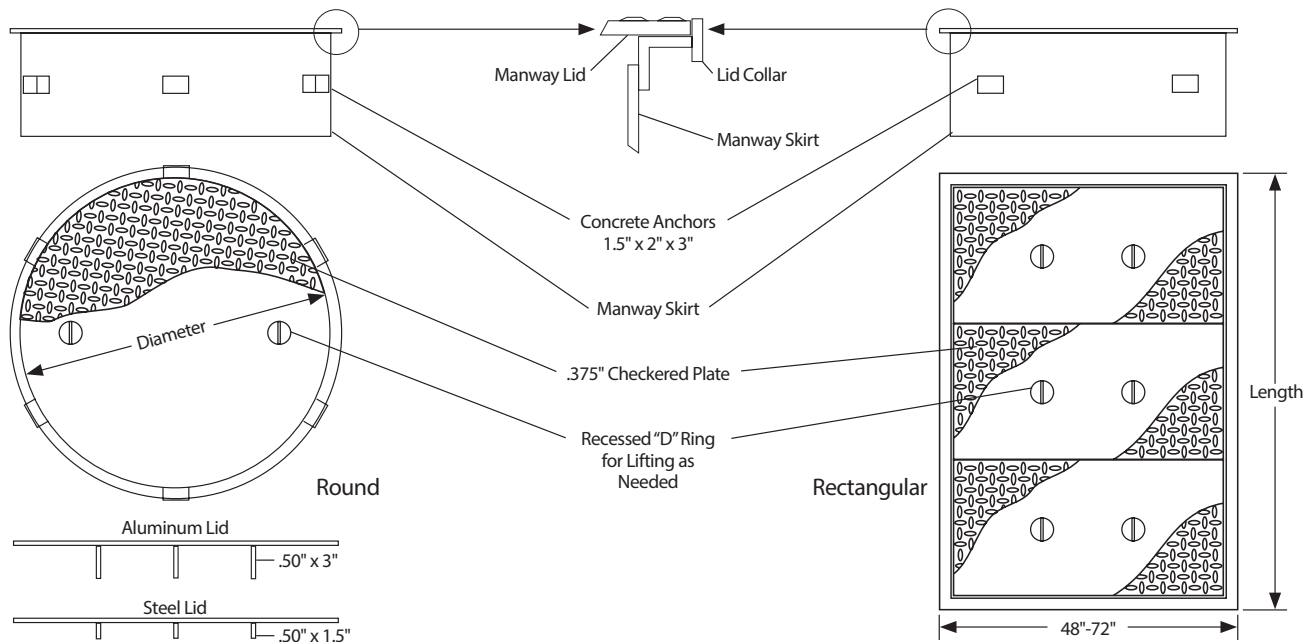
Each manway is constructed using A36 steel plate from 10 ga to 1/4" thick. Standard manways are fabricated with a 12" skirt depth. Each GLM is fitted with 1.5" x 2" x 3" steel concrete anchors seal welded to the manway skirt to ensure a secure installation.

Standard manway lids are constructed of 3/8" reinforced checkered steel plate. Optional 3/8" checkered plate reinforced aluminum lids are available.

Steel components receive a brush blast and are coated with black enamel paint. Optional polyurethane or epoxy coatings are available.



General Arrangement



Round Nominal Manway Diameters

Model Number	Manway Skirt I.D. Inches	Manway Lid Collar I.D. Inches	Manway Lid O.D. Inches	Skirt Thickness
GLM-12	12"	14.5"	14"	10ga
GLM-18	18"	20.5"	20"	7ga
GLM-24	24"	26.5"	26"	7ga
GLM-30	30"	32.5"	32"	7ga
GLM-32	32"	34.5"	34"	7ga
GLM-36	36"	38.5"	38"	7ga
GLM-42	42"	44.5"	44"	.25"
GLM-48	48"	50.5"	50"	.25"

Rectangular

Model	Number of Doors	Maximum Overall Length	Skirt Thickness
R-GLM-48	1	48	.25"
R-GLM-60	2	60	.25"
R-GLM-90	3	90	.25"
R-GLM-120	4	120	.25"
R-GLM-150	5	150	.25"

Warranty

The subject manway is warranted by Highland Tank & Mfg. Co. to be free from defects in manufacturing, workmanship and materials. Highland Tank will repair or replace, at its sole discretion F.O.B. factory, within a period of one year after date of shipment, any item of our manufacture. All other items shall be warranted by their respective manufacturers. Liability hereunder is limited, as stated above, and does not include labor, installation costs, indirect or consequential damages of any kind. Manways must be returned to the factory and if found to be defective upon examination, will be repaired, replaced or credit will be issued at our option.

Approved Manufacturer

Tank to be manufactured by Highland Tank at one of the following locations: Stoystown, PA, Manheim, PA, Watervliet, NY, or Greensboro, NC.



Highland Tank®

Stoystown, PA
One Highland Road
Stoystown, PA 15563-0338
814.893.5701

Manheim, PA
4535 Elizabethtown Road
Manheim, PA 17545-9410
717.664.0600

Watervliet, NY
958 19th Street
Watervliet, NY 12189-1752
518.273.0801

Greensboro, NC
2700 Patterson Street
Greensboro, NC 27407-2317
336.218.0801

Lebanon, PA
2225 Chestnut Street
Lebanon, PA 17042-2504
717.664.0602

Friedens, PA
1510 Stoystown Road
Friedens, PA 15541-7402
814.443.6800

Clarkston, MI
4701 White Lake Road
Clarkston, MI 48346-2554
248.625.8700

Mancelona, MI
9517 Lake Street
Mancelona, MI 49659-7968
231.587.8412



PROUDLY MADE IN AMERICA